

本书编委会 编

# 域下

中国室内设计年鉴

INTERIOR DESIGN YEARBOOK OF CHINA

中国林业出版社  
China Forestry Publishing House





# Kartel 酒吧

项目地点:上海襄阳北路1号5楼

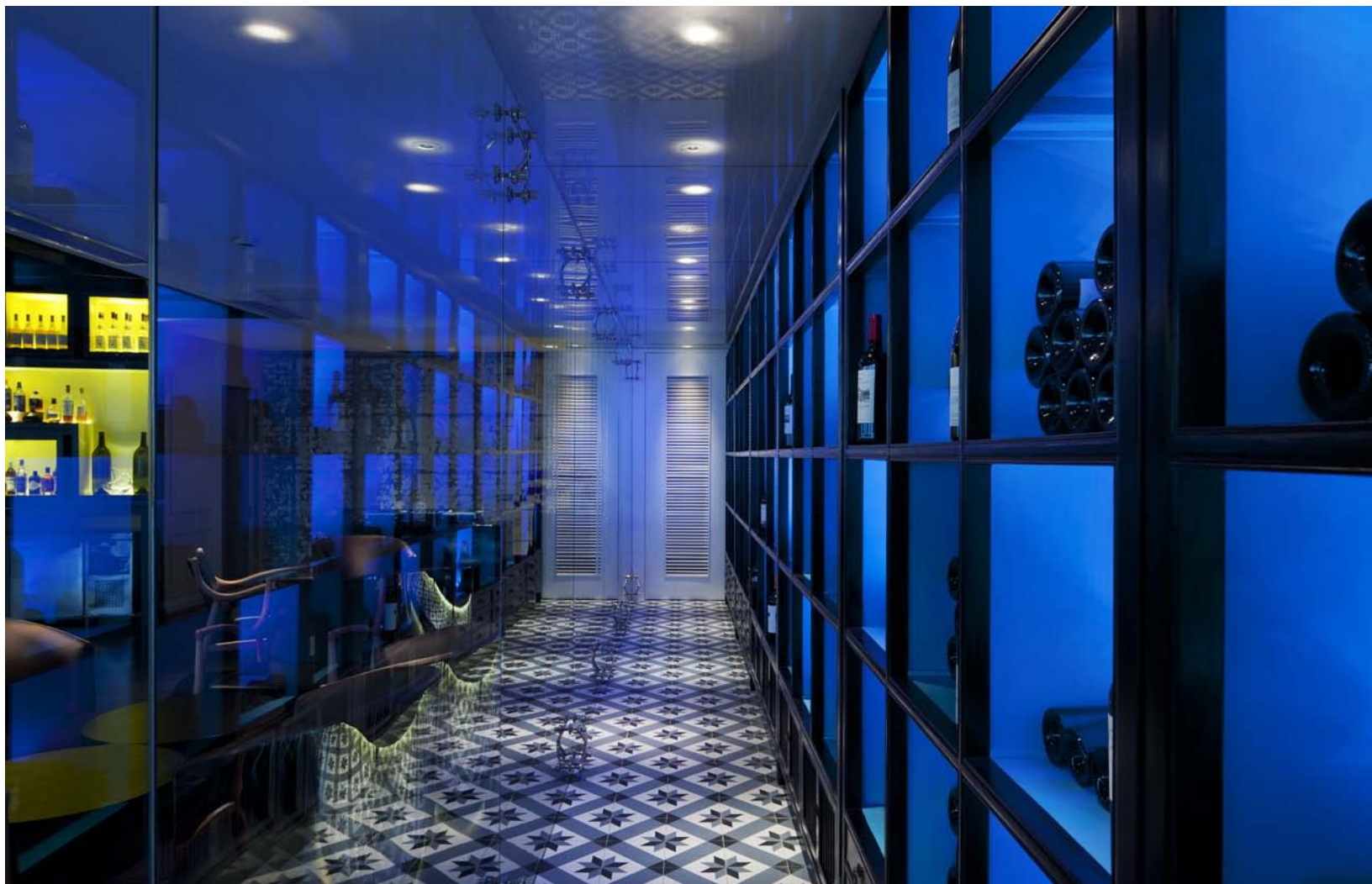
设计单位:Lime 388

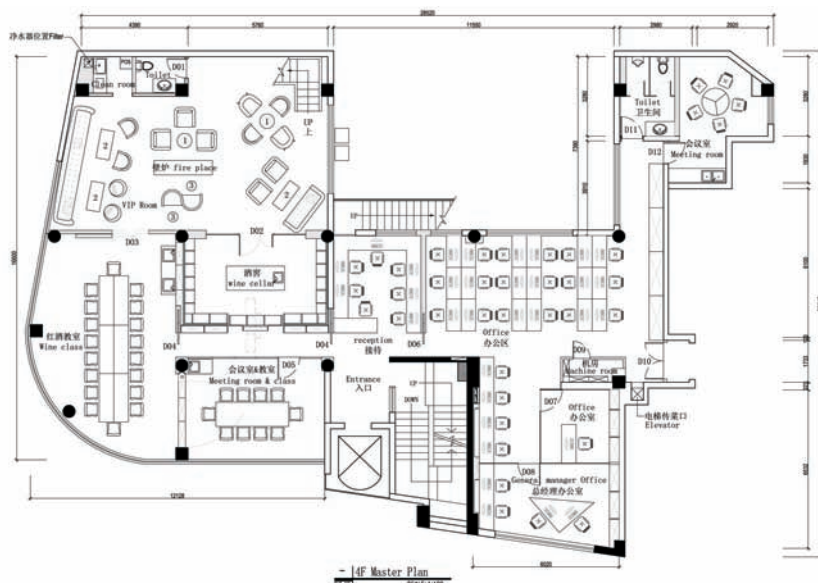
设计师:Thomas Dariel、Benoit Arfeuille

主要材料:定制瓷砖、地板、玻璃、油漆

建筑面积:四楼 183 m<sup>2</sup>;五楼 186 m<sup>2</sup> 天台 186 m<sup>2</sup>

摄影师:Derryck Menere





Kartel是一座豪华酒吧,位于前上海法租界的核心地段。该地段是一个宜人的居住和购物区域,中欧风格的建筑,国际餐厅和小商铺,梧桐树成荫的街道和老式弄堂在这里完美融合,这就造就了今天的上海。随着“摧毁别致”的概念,两位设计师 Thomas Dariel & Benoit Arfeuille希望使Kartel在这片充满历史记忆的地域里,展现其优雅而又发人深省的强烈对比。

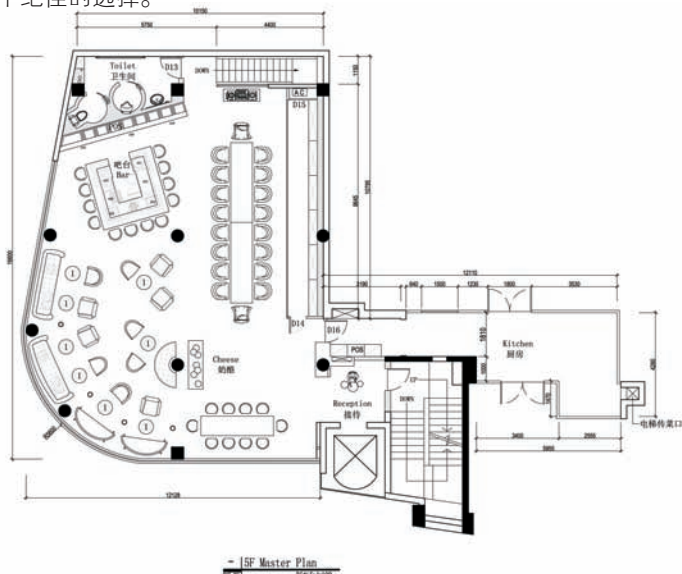
由于Kartel所在的大楼仍在进行之前的拆除工作,这更自然地契合了“摧毁”这一主题。伴随着破旧墙面的剥落,大楼本身的结构逐渐显现出来,更突现了应当被保留的形状、质地以及深厚的历史记忆。在欧洲,“Beaux-Arts”风格向来推崇那些剥去一切掩盖其原始建筑的楼宇,因此设计师决定在此也顺势保留几处原始的风味。剥落的墙壁,未包裹装饰的柱子,建筑工人留下的字迹,都成为这些原始风味的历史元素。为了平衡这一点,设计师特别运用优雅醒目的装饰和时尚的定制家具来营造Kartel充满欧亚风情的温暖氛围。酒吧一共有3层,其中两层位于前法租界的一幢老楼的4-5楼,外加一个拥有360°环景的露台,这三层不同风格的空间分别演绎了不同的情调氛围。

4楼的布置和壁炉令人想起传统巴黎沙龙的温馨气氛,喝上一杯勃艮第红酒,与三五知己时而热烈时而亲密的聊天。5楼是酒吧的主要





区域,透过环绕的落地窗坐拥令人惊艳的上海摩天美景,完全颠覆对于酒吧的老套印象。这里找不到传统酒吧惯用的装饰橡木桶,而会发现很别致的浴缸形状的沙发椅,配上镀金扶手,与受装饰艺术启发的桌子相符相呈。顺着墙,一大排的酒架成为整个房间的亮点,像是舞台上的杰作,让人突然回神,酒,在这里,仍然是主题。屋顶露台上,舒适的沙发和高档的桌椅摆放适当,不管坐在哪个位子都可以拥览无与伦比的法租界360°全景,对于那些寻求休闲氛围的人来说这是一个绝佳的选择。







Kartel is a three - story lounge bar located in the former Shanghai French Concession. The neighborhood is a pleasant mix of residential and retail areas, Chinese and European style architecture, international restaurants and tiny stalls, wide tree lined streets and traditional lanes ... a perfect combination of what constitutes the city today.

With a concept of "Destroy Chic", the two designers Thomas Dariel & Benoit Arfeuille wanted with Kartel to play with these contrasts, to be elegant yet provoking in this very heritage dis-

trict.

As the demolition of the previous space was going on, the "Destroy" part of the concept naturally grew on. While the walls were falling, the original structure of the building reveals itself, featuring shapes, textures, memories that ought to be kept. As the "Beaux - Arts" style in Europe pays homage to the buildings by ripping off everything that is hiding their original architecture, the creators decided here to keep several places as original. Exposed concrete walls, undressed stripped

down pillars, and old letterings made by the people who built the place are part of these heritage elements.

Answering and balancing this raw side, Kartel offers an elegant and sophisticated décor served by comfy and stylish custom - made furniture, a warm atmosphere combining and mix - matching European and Asian influences. The lounge spans on three floors, two indoor plus a rooftop terrace. Three spaces proposing three distinct styles and atmospheres.



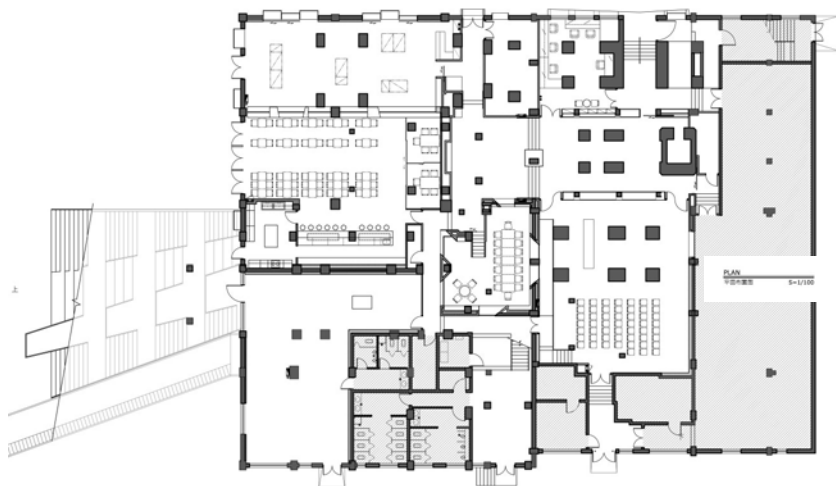
# Kartel Wine Lounge





# 半岛 1919红坊艺术设计中心

项目地点: 上海宝山 1919 创意园  
设计公司: 吕永中设计咨询有限公司  
设计师: 吕永中  
参与设计: 席佳, 区润宇, 尹秀敏  
建筑面积: 1400 m<sup>2</sup>  
项目日期: 2011  
摄影师: 吴永长



本案位于上海宝山 1919 创意园 10 号楼, 占地面积约 1400 m<sup>2</sup>, 作为面向园区的复合功能服务平台, 艺术中心拥有展览、会议、阅览、销售等功能组合, 以满足园区内外不同需求。

园区前身是上海棉纺八厂, 有近一个世纪的历史, 10 号楼则是前厂区的火力发电机房。先将煤运至楼层高处, 再源源不断供应给底层的火力发电机组。根据运输、承重的实际需要, 建筑底层密密麻麻建造了众多大小不一的巨型水泥柱, 这是一个典型的构筑物空间。

一千多平方米面积有近百根柱基。经过分析, 在原杂乱无章的梁柱中梳理, 根据原结构使用功能, 区分出建筑结构与设备基础。剥去设备基础外的粉刷涂层, 呈现出水泥基础的原始粗犷力量, 并小心保留工业历史时期的标识和痕迹, 以最大程度还原其本质面貌。

粗壮的水泥立柱与狭小低矮的空间形成有如古堡式的封闭压力与探索的神秘。空间

布局顺其自然, 将大小不一的空间进行一系列精巧的串联, 充分利用地面的高低起伏, 隔墙虚实结合, 灯光若隐若现, 给人几分寻觅的期待。

把阅览室设置在中心区域, 围绕四周布局其余功能空间。穿越四周低矮空间, 登上有如圣殿般的“天井”阅览区。仰望看人造天光从 9 m 高的天井倾泻而下, 并在墙面有序变化的冲孔木板上演绎出和谐、静逸的韵律。浅木色基调中晕染出温馨、淡雅的氛围, 喻意着对知识和思考作为创意产业的活力与源泉的一种尊

重和景仰。

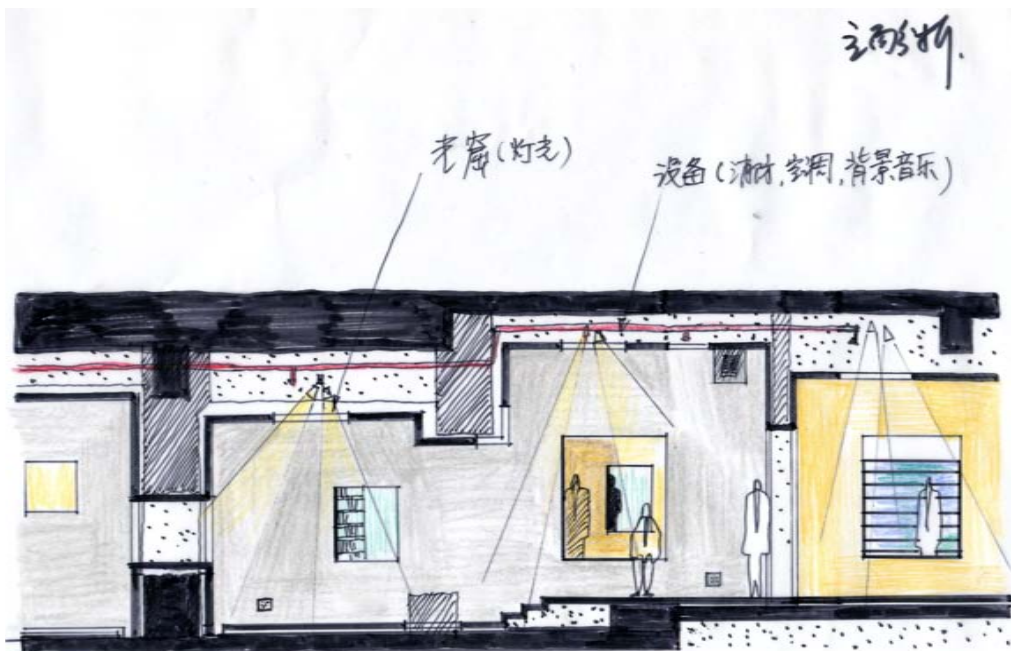
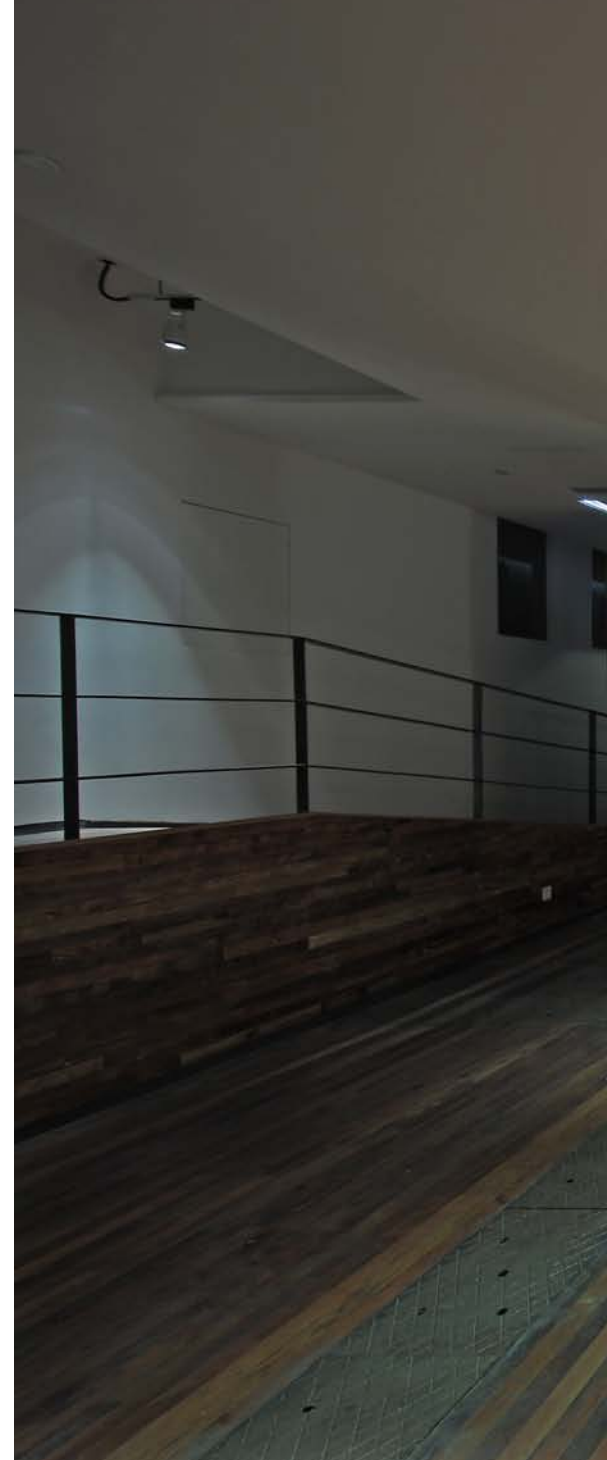
带有方洞的轻薄隔断有如“纸窟”, 轻柔附着于粗犷的水泥构件上, 随着功能与空间转换延展, 并提供了展示的功能需求, 在历史的痕迹中翩翩起舞。

没有推腐拉朽式的拆除、没有光彩夺目的装点、没有华丽浓艳的涂抹, 设计师对历史的欣然尊重, 对空间细致入微的理解, 谦和自然的创作态度以及简洁精炼的手法, 让老的建筑得以延续着历史的积淀, 并焕发出充满想象的









# Designed and transformed by Bandao 1919 Red Workshop Art Design Center

This case is located at the No.10 building in Innovative Park of Baoshan Shanghai in 1919, covering 1400 square meters in terms of area. As the comprehensive service platform facing this park, this art center merges exhibition, conference, reading and selling into a single whole to meet the various needs in this park.

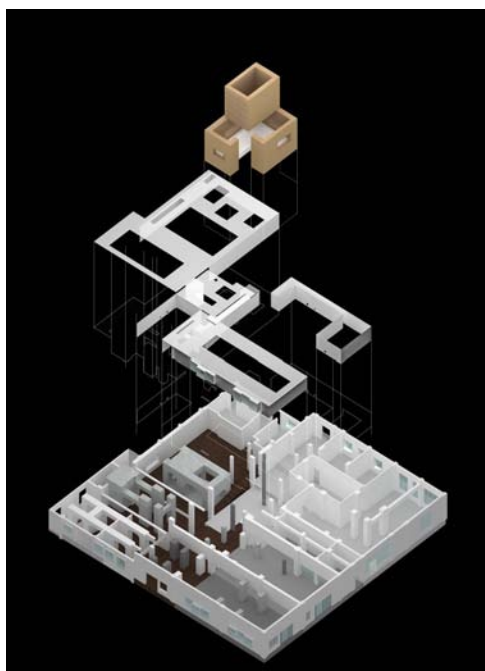
The former of this park is Shanghai Cotton

Spinning No.8 Plant, which has a history with almost one century. The No.10 building is the thermal power general room of the first part of the plant. Firstly, they convey the coal to high level, and then put them to the thermal power generator continuously. In accordance with the actual needs of transportation and load-bearing, there are set various of huge cement pillar at the bottom of the

building, which is a typical construction space.

There are almost a hundred of pillar among the one thousand square meters. Through analysis, among the disorderly pillars, according to the original structure function, they can be distinguished clearly in terms of construct structure and the equipment base. Stripping off the pink paint of the equipment base, it shows the roughness power







of cement. They have reserved the marks and tracks of industrial historical period carefully, which have re-shown the basic shape mostly.

The rough cement pillar and the low & narrow space have formed castle type's closing pressure and mystery. The space layout is in line with the nature, which has connected the different size spaces into together. Fully utilizing of high and lower space, partitions, dreamy light, they have brought some expectation to people.

Putting the reading room in the center part,

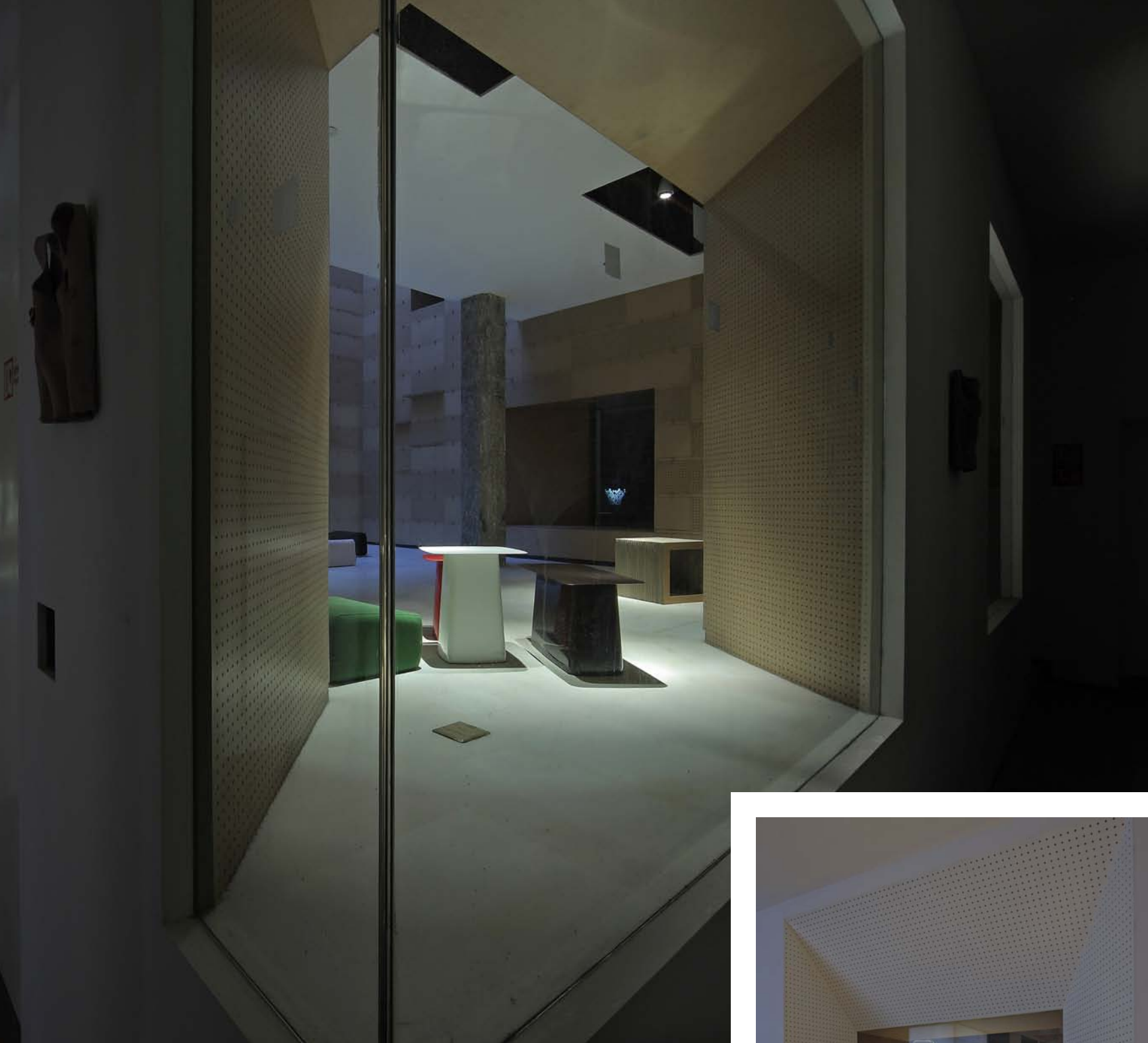
the designer arranges the surrounding space. Through the surrounding low space, it gives you a palace-like "well" reading area. Looking up the man-made sunshine which pours down from 9 meters high, it performs the harmony and quiet rhythm combined with the changeable wooden plate on the wall. The lighten wooden tone has generated the warm and elegant atmosphere, which shows the respect and warship to the knowledge and consideration.

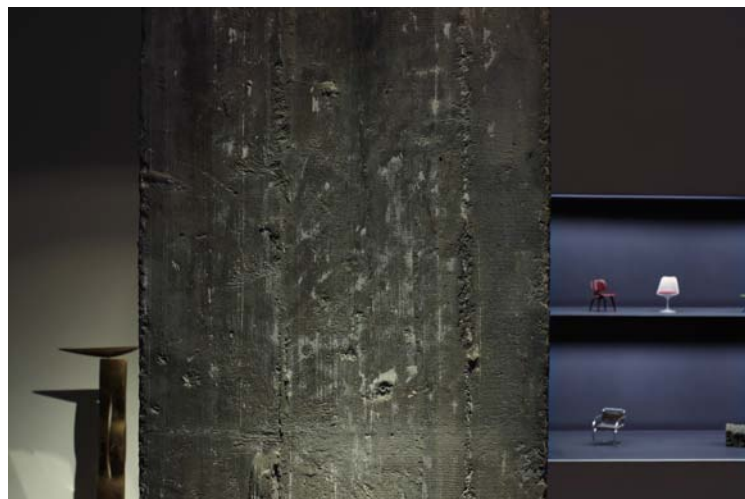
The light and thin separate wall with holes

seems like "Paper Cave", which is attached on the rough cement softly. They change and extend with the function and space. In addition, they have realized the demonstration function, dancing in the historical traces.

No decay strike, no luxury decoration, no gorgeous painting, the designer adopts respecting to history, understanding the details of space, humble nature creating attitude as well as simply skills to let the old building succeed the historical traces and show the new appearance full of imagination.













## 上海爱莎金煦 全套房酒店

项目地点:陕西北路288号

设计单位:DARIEL STUDIO

设计师:Thomas DARIEL

项目负责人:侯胤杰

摄影师:Derryck Menere

本案的设计理念是将时尚元素带进商务酒店,改变商务酒店一成不变的固定模式,更能符合这个黄金地段定位,与周边的时尚奢侈品牌相得益彰。设计师的灵感源于法国知名西装品牌 DORMEUIL(多美),他将细致的西装布料的条纹元素转化为室内设计的一部分,用艺术感的条纹壁纸或地毯装点空间,即与商务人士相契合,又与时尚不谋而合,更带给商务酒店房间一丝新鲜感。同时,设计师并没有忽略作为一家商务酒店所需具备的功能性,而是将其功能与美观完美地结合在一起。

善于运用颜色的 Thomas DarieI 在这次的设计中也不可避免表现其对色彩的把握,他在不同的客房里无规则的运用了6种不同的颜色主题:粉色、绿色、蓝色、紫色、灰色、黑色。他的设计初衷是希望带给商务客不同以往的感受,当客人到达时,酒店可以根据客人当时的心情来提供相应颜色的房间,也为客人的再次来访做出铺垫,直到他确定自己最喜欢的房间主题,也可谓带动酒店的再次消费。

对于细节也相当讲究的 Thomas DarieI,更

是不遗余力的在很多地方展现其追求完美品质的特点。浴室的法国大理石;复古感觉的木地板;开衣柜的皮质小拉手;衣柜门上的优雅的法式复古线型;放大空间感的镜子,让你感觉仍身处奢侈品店里购物试衣。

热爱在设计中隐藏一些小惊喜的 Thomas 希望由客人自己去发掘其中透路的 DARIEL 式的幽默。即使在这次的商务酒店设计中也不例外,当你打开衣柜的门时,殊不知竟然只是一扇挡在墙前的假柜门,而门后是一副艺术作品,海报中的外国人正举起相机对着你。装饰的石膏像上带着耳机,只要你把 iPhone 放在前面的坐充上,你就能带上耳机在房间任何一个角落享受音乐的环绕。

上海爱莎金煦全套房酒店经由 DarieI Studio 的设计改造,重新赋予这幢大楼新的活力并开启其位于这黄金地段的新角色。酒店不仅舒适优雅,设施齐全,而且坐拥市中心的繁华夜景,充分调动五官感受,使出差旅行变成一种享受。





# Golden Tulip Ashar Suites Shanghai Central

The idea of this project is to incorporate fashionable elements in order to alter people's initial impression of a formal business hotel and respect the design of the surrounding luxurious area. The designer uses an eco-stripped pattern from good-quality suit fabric, composed by the well-known French brand DORMEUIL, as the wallpaper and carpet in order to create an artistic and modern living space. This style not only brings out a fresh feeling but also illustrates an image of business in a fashionable way. Therefore, the designer combines the aspects of functionality and aesthetics together flawlessly without disregarding the hotel's original intention of being a business hotel.

Thomas Dariel expresses and executes his talented skills by working with six different color themes in this project. To design the various rooms, he combines two colors from a palette of pink, green, blue, purple, grey and black. His original idea of different color themes is to give the guest an unusual experience of allowing her to choose a color theme according to her current mood. This design encourages guests to visit again, inspiring their hopes of finding the room of their choice.

Thomas Dariel effortlessly demonstrates his pursuit in designing with top quality detail. The French marble in bathroom; the vintage wood floor; the elegant French line on the closet door; the mirror for decoration, and the enlarged space all emulate the design of an elaborate boutique store.



















Dariel Studio loves hiding some surprises in his design, where guests can discover his unique sense of humour. In the Golden Tulip Hotel for instance, when guests intend to open the closet door, they unexpectedly find a large poster of a man holding a camera in a way as if he was taking their picture. Another surprising, and almost playful touch, is that the door is simply a replica of a closet door. In addition, a head made of deco plaster wears headphones a guest can borrow if he or she

wishes to listen to music from their iphone.

After being designed and renovated by Dariel Studio, this building has restored its vitality and is repositioned as Golden Tulip Ashar Suites Shanghai Central. Featuring an elegant and comfortable style, fully equipped facilities, and a beautiful view of Shanghai's bustling city, Golden Tulip Ashar Suites Shanghai Central is a grand hotel that transforms one's overall business trip experience into a pleasurable one.





